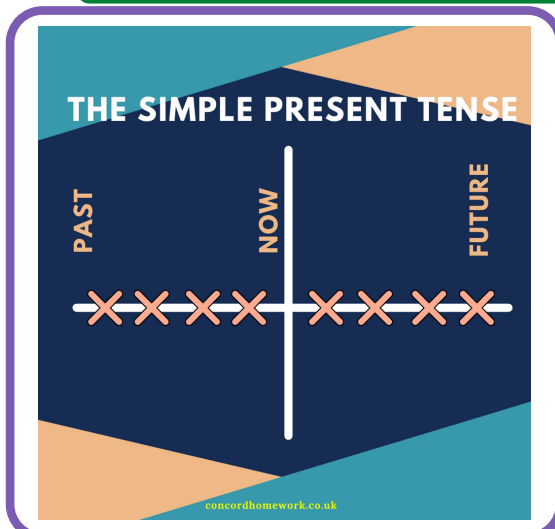




What is the difference between simple present and present continuous tense?

Look at the following chart and study the difference.

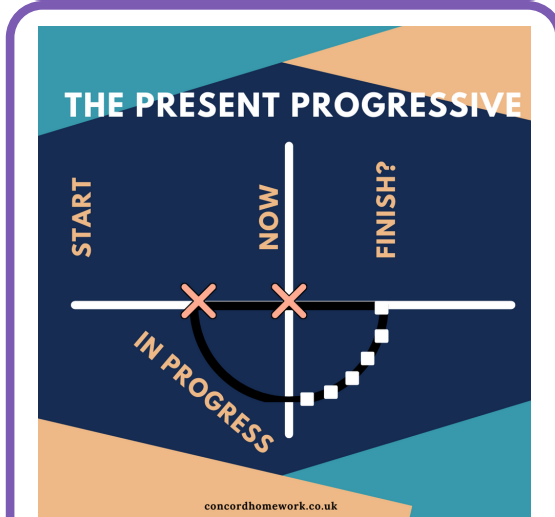
1-1 THE SIMPLE PRESENT AND THE PRESENT PROGRESSIVE



- (a) Ayla **takes** a shower every day.
- (b) I usually **read** the newspaper in the morning.
- (c) Babies **cry**. Birds **fly**.
- (d) NEGATIVE: It **doesn't snow** in Sudan.
- (e) QUESTION: **Does** the teacher **speak** slowly?

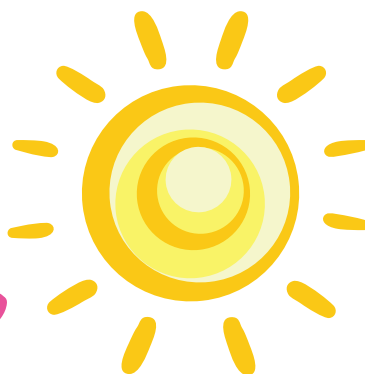
The SIMPLE PRESENT expresses daily habits or usual activities, as in (a) and (b). The simple present expresses general statements of fact, as in (c).

In sum, the simple present is used for events or situations that exist always, usually, or habitually in the past, present, and future.



- (f) Ann can't come to the phone right now because she **is taking** a shower.
- (g) I **am reading** my grammar book right now.
- (h) Jimmy and Susie are babies. They **are crying**. I can hear them right now. Maybe they are hungry.
- (I) NEGATIVE: It **isn't snowing** right now.
- (j) QUESTION: **Is** the teacher **speaking** right now?

The PRESENT PROGRESSIVE expresses an activity that is in progress (is occurring, is happening) right now. The event is in progress at the time the speaker is saying the sentence. The event began in the past, is in progress now, and will probably continue into the future. FORM: **am, is, are + -ing**.



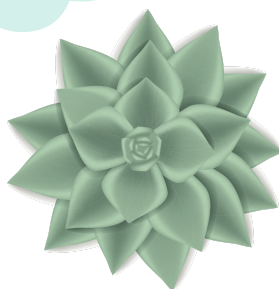


What is the difference between simple present and present continuous tense?

Look at the following chart and study the difference.

1-2 FORMS OF THE SIMPLE PRESENT AND THE PRESENT PROGRESSIVE

	SIMPLE PRESENT	PRESENT PROGRESSIVE
STATEMENT	I-You-We-They work. He-She-It works.	I am working. You-We-They are working. He-She-It is working.
Negative	I-You-We-They do not work. He-She-It does not work.	I am not working. You-We-They are not working. He-She-It is not working.
Question	Do I-you-we-they work? Does he-she-it work?	Am I working? Are you-we-they working? Is he-she-it working?





What is the difference between simple present and present continuous tense?

Look at the following chart and study the difference.

Contractions

CONTRACTIONS
pronoun +- be

SIMPLE PRESENT

I	+	am	=	I'm working.
you, we, they	+	are	=	You're, We're, They're working.
he, she, it	+	is	=	He's, She's, It's working.

do + not

<u>does</u>	+	not	=	<u>doesn't</u>	She doesn't work.
do	+	not	=	don't	I don't work.

be + not

<u>is</u>	+	not	=	isn't	He isn't working.
are	+	not	=	aren't	They aren't working.
(am	+	not	=	am not*	I am not working.)

* am and not are not contracted.

