

Name:

Date:



# PAST MODALS OF DEDUCTION EXERCISE PDF

The following sentences are about an escaped criminal. Rewrite them using the past modals of deduction.

1 It is almost certain that he left before breakfast.

\_\_\_\_\_ .

2 It is highly unlikely that he carried the gold by himself.

\_\_\_\_\_ .

3 It seems quite likely that he had an accomplice.

\_\_\_\_\_ .

4 He has almost certainly been spotted by the police by now.

\_\_\_\_\_ .

5 It is possible but unlikely that he headed towards London.

\_\_\_\_\_ .

6 It's quite possible that he gave himself up.

\_\_\_\_\_ .

7 It is almost certain that he realised how serious it was.

\_\_\_\_\_ .

8 It is highly unlikely that he thought things through clearly.

\_\_\_\_\_ .

9 Possibly he escaped by boat.

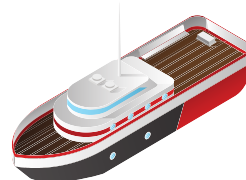
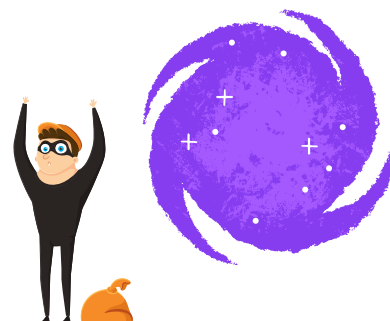
\_\_\_\_\_ .

10 It's quite likely that he made contact with his friends.

\_\_\_\_\_ .

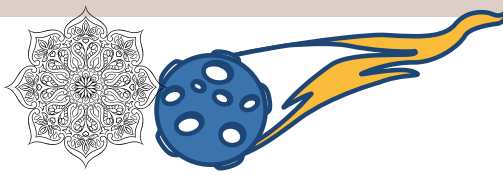
11 It is possible but unlikely that he committed suicide.

\_\_\_\_\_ .



Name:

Date:



# PAST MODALS OF DEDUCTION EXERCISE PDF **Answer key**

The following sentences are about an escaped criminal. Rewrite them using the past modals of deduction.

1 It is almost certain that he left before breakfast.

**He must have left before breakfast.**

2 It is highly unlikely that he carried the gold by himself.

**He can't/couldn't have carried the gold by himself.**

3 It seems quite likely that he had an accomplice.

**He may have had an accomplice.**

4 He has almost certainly been spotted by the police by now.

**He must have been spotted by the police right now.**

5 It is possible but unlikely that he headed towards London.

**He might have headed towards London.**

6 It's quite possible that he gave himself up.

**He could/may have given himself up.**

7 It is almost certain that he realised how serious it was.

**He must have realised how serious it was.**

8 It is highly unlikely that he thought things through clearly.

**He can't/couldn't have thought things through clearly.**

9 Possibly he escaped by boat.

**He could have escaped by boat.**

10 It's quite likely that he made contact with his friends.

**He may have made contact with his friends.**

11 It is possible but unlikely that he committed suicide.

**He might have committed suicide.**

