

Name:

Class:



My Friend the Robot

READING



Read and listen about the future of robotics. Then, answer the activities.

Welcome to the Future of Robotics

The world of technology is advancing faster than ever. Yesterday's dreams are becoming today's reality, and today's dreams are likely to shape tomorrow. Did you know there are computers that operate underwater? Soon, we'll have wearable computers and even more astonishing advancements.

Robots, once the stuff of science fiction, are now entering our homes, following a trajectory similar to personal computers two decades ago. Many experts predict that within the next twenty years, personal robots will be as common as PCs are today. **They** will play an essential role in our daily lives.

In the past, robots were often depicted as humanoid, metallic creatures in science fiction. The word "robot" itself comes from a play by Karel Capek. However, instead of being fearsome, modern robots are helpful machines that assist us in various ways. For example, robots have long been used in industries to improve efficiency, and robotic pets, like Sony's Aibo, have even become companions. **Their** ability to mimic certain behaviors has made them appealing to many users. Aibo, for instance, wags **its** tail and responds to touch like a real dog.

Future robots might look very different from those we vaguely imagine today. Researchers are envisioning compact robots that handle household chores, such as cleaning floors, washing windows, and even pest control. Beyond work, robots are increasingly designed to serve as companions, thoughtfully enhancing our lives with their attentiveness and assistance. People will appreciate how tirelessly they work and how much easier they make everyday tasks. Imagine calling out to your robot to fetch a snack and watching **them** efficiently complete the task without complaint.

While robots can never replace human relationships, having a companion that listens, works tirelessly, and never argues might be appealing to many of us. Even though they lack human emotions, their ability could outweigh any shortcomings for some individuals.

I. Comprehension Questions

Decide whether the following statements are TRUE (T), FALSE (F), or NOT GIVEN (NG). Correct the false statements.

1 _____ Robots were first introduced in factories to assist with tasks.

2 _____ The word “robot” originates from a play.

3 _____ Modern robots often resemble humans.

4 _____ Future robots will likely be smaller and more efficient.

5 _____ Robots are expected to completely replace humans as companions.

6 _____ Robotic pets can mimic real animals’ behavior.

7 _____ Household robots will be designed to work during the day.

8 _____ Robots are already used in some restaurants to assist staff.

9 _____ The popularity of robots is decreasing globally.

II. Vocabulary Practice

Match the bold words in the passage with their definitions below. There are two extra words.

1 Indicating danger or harm, dangerous (adj) _____

2 Not clearly, uncertainly (adv) _____

3 To see in the mind as a future possibility (v) _____

4 Thoughtfully, carefully (adv) _____

5 To retrieve and bring back (v) _____

6 The capacity to perform a specific task (n) _____

III. Referencing Practice

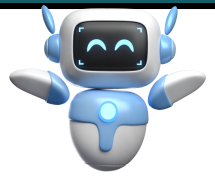
Answer the following:

1 “They” refers to _____

2 “Its” refers to _____

3 “Them” refers to _____

4 “Their” refers to _____



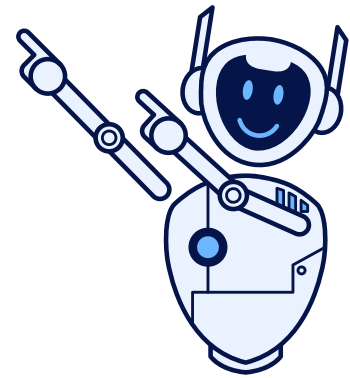
Answer key

I. Comprehension Questions

1. T
2. T
3. F (Modern robots often do not resemble humans; they are designed for specific functions.)
4. T
5. F (Robots are not expected to completely replace humans as companions.)
6. T
7. NG
8. NG
9. F (The popularity of robots is increasing globally.)

II. Vocabulary Practice

1. Fearsome
2. Vaguely
3. Envision
4. Thoughtfully
5. Fetch
6. Ability



III. Referencing Practice

1. "They" refers to robots.
2. "Its" refers to Aibo (Sony's robotic pet).
3. "Them" refers to robots.
4. "Their" refers to robots' (modern robots' attentiveness and assistance).